



# Timberline<sup>®</sup> HDZ<sup>™</sup>

High Definition<sup>®</sup> Shingles



Colour shown: Pewter Gray

Millions of families have found shelter and peace of mind under a Timberline<sup>®</sup> roof.

And now, a good thing just got even better.

We protect what matters most<sup>™</sup>





# It's never just a roof. It's a promise, kept.

Providing a home means making a promise — of shelter, security, and stability. It says to the people who count on you, “You’re going to be safe, dry and warm under this roof.”

Choosing a Timberline® HDZ™ roof is a great way to help keep that promise.

It's our first shingle ever to come with patented LayerLock® Technology. That means it's engineered for the best possible installation.



# It's a shingle that helps your roofer do their best work.

LayerLock™ Technology strengthens the bond between layers of your Timberline® HDZ™ Shingles. To help your roofer give you the best possible installation. And to help you rest easy when the wind is howling outside.

## Here's how it works:

The strength added by LayerLock™ Technology allowed GAF to create the StrikeZone™ nailing area — the industry's widest nail zone — which offered 99.9% nailing accuracy in our test.<sup>1</sup>

LayerLock™ Technology also powers the industry's first wind warranty with no maximum wind speed limitation. Timberline® HDZ™ Shingles are eligible for the WindProven™ limited wind warranty when installed with the required combination of four qualifying GAF Accessories.<sup>2</sup>



<sup>1</sup> Results based on study conducted by Home Innovation Research Labs, an independent research lab, comparing installation of Timberline HD® Shingles to Timberline® HDZ™ Shingles on a 16-square roof deck using standard 4-nail nailing pattern under controlled laboratory conditions. Actual results may vary.

<sup>2</sup> 15-year WindProven™ limited wind warranty on Timberline® HDZ™ Shingles requires the use of GAF starter strips, roof deck protection, ridge cap shingles, and leak barrier or attic ventilation. See *GAF Roofing System Limited Warranty* for complete coverage and restrictions. Visit [gaf.ca/LRS](http://gaf.ca/LRS) for qualifying GAF products. For installations not eligible for the WindProven™ limited wind warranty, see *GAF Shingle & Accessory Limited Warranty* for complete coverage and restrictions.

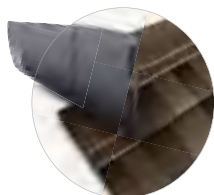
# It's a system, built to protect

A Timberline® HDZ™ roof is so much more than shingles. It's layers of protection, working together to help keep your home safe from rain, snow, sun, and wind.

In fact, installing 4 qualifying GAF Accessories — GAF starter strips, roof deck protection, ridge cap shingles, and either leak barrier or attic ventilation — in one roof system makes Timberline® HDZ™ Shingles eligible for the WindProven™ limited wind warranty.<sup>1</sup>

Timberline® HDZ™ Shingles also feature StainGuard® Algae Protection, which helps protect the beauty of your roof against unsightly blue-green algae discoloration.<sup>2</sup>

Visit [gaf.ca/LRS](http://gaf.ca/LRS) for qualifying GAF products.



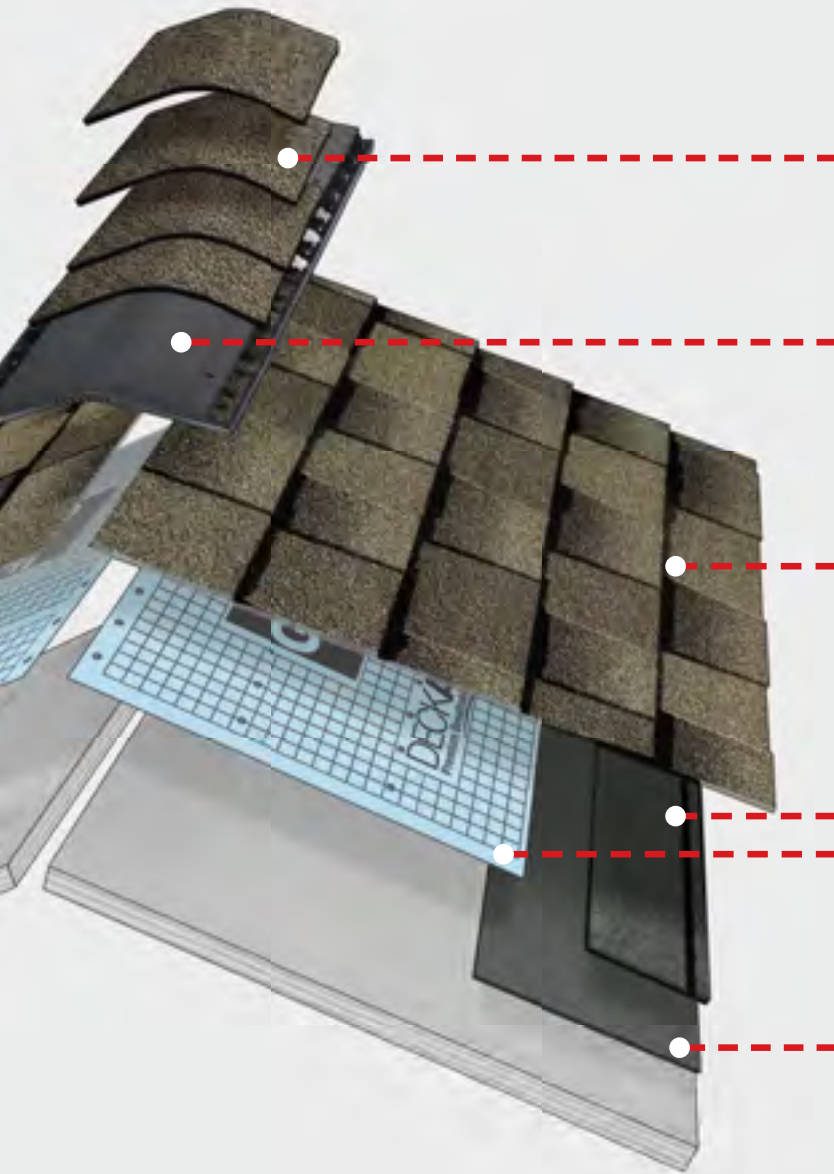
LayerLock™ Technology mechanically fuses the common bond between overlapping shingle layers. The added strength at the common bond powers the StrikeZone™ — the industry's widest nailing area.



<sup>1</sup> 15-year WindProven™ limited wind warranty on Timberline® HDZ™ Shingles requires the use of GAF starter strips, roof deck protection, ridge cap shingles, and leak barrier or attic ventilation. See *GAF Roofing System Limited Warranty* for complete coverage and restrictions. Visit [gaf.ca/LRS](http://gaf.ca/LRS) for qualifying GAF products. For installations not eligible for the WindProven™ limited wind warranty, see *GAF Shingle & Accessory Limited Warranty* for complete coverage and restrictions.

<sup>2</sup> StainGuard® algae protection is available only on shingles sold in packages bearing the StainGuard® logo. Products with StainGuard® algae protection are covered by a 10-year limited warranty against blue-green algae discoloration. See *GAF Shingle & Accessory Limited Warranty* for complete coverage and restrictions.

## The GAF Lifetime<sup>1</sup> Roofing System



### Ridge Cap Shingles

The finishing touch that helps defend against leaks at the hips and ridges



### Cobra<sup>®</sup> Attic Ventilation

Helps reduce attic moisture and heat



### Lifetime Shingles<sup>1</sup>

Beautify and protect for years to come



### Starter Strip Shingles

Helps guard against shingle blow-offs



### Roof Deck Protection

Helps shield the roof deck from moisture infiltration



### Leak Barrier

Helps prevent leaks caused by wind-driven rain and ice dams

Install any GAF Lifetime<sup>1</sup> Shingle and at least 3 qualifying GAF Accessories and get a Lifetime<sup>1</sup> limited warranty on your qualifying GAF products plus

non-prorated coverage for the first 10 years. For even stronger coverage, ask your GAF factory-certified contractor<sup>2</sup> about enhanced GAF warranties.



<sup>1</sup> Lifetime refers to the length of warranty coverage provided and means as long as the original individual owner(s) of a single-family detached residence [or eligible second owner(s)] owns the property where the qualifying GAF products are installed. For other owners/structures, Lifetime coverage is not applicable. Lifetime coverage on shingles requires use of GAF Lifetime shingles only. See *GAF Shingle & Accessory Limited Warranty* for complete coverage and restrictions. Lifetime coverage on shingles and accessories requires use of any GAF Lifetime Shingle and at least 3 qualifying GAF accessories. See *GAF Roofing System Limited Warranty* for complete coverage and restrictions. Visit [gaf.ca/LRS](http://gaf.ca/LRS) for qualifying GAF products. For installations not eligible for the *GAF Roofing System Limited Warranty*, see the *GAF Shingle & Accessory Limited Warranty*.

<sup>2</sup> Contractors enrolled in GAF certification programs are not employees or agents of GAF, and GAF does not control or otherwise supervise these independent businesses. Contractors may receive benefits, such as loyalty rewards points and discounts on marketing tools from GAF for participating in the program and offering GAF enhanced warranties, which require the use of a minimum amount of GAF products.



## Charcoal

Charcoal is the most neutral of shades, and works wonderfully with blues, grays, whites, yellow, gold, sage, and green.

Note: It is difficult to reproduce the colour clarity and actual colour blends of these products. Before selecting your colour, please ask to see several full-size shingles.





## Pewter Gray

Pewter Gray can add dramatic counterpoint to contemporary exterior colour palettes, as well as to stucco or brick facades.

Note: It is difficult to reproduce the colour clarity and actual colour blends of these products. Before selecting your colour, please ask to see several full-size shingles.



## Barkwood

The neutral brown Barkwood emulates wood and coordinates well with warm colours like beige, taupe, cream, gold, and yellow.

Note: It is difficult to reproduce the colour clarity and actual colour blends of these products. Before selecting your colour, please ask to see several full-size shingles.



## Canadian Driftwood

The organic brown of Canadian Driftwood includes a cool gray undertone, and complements any earth tone.

Note: It is difficult to reproduce the colour clarity and actual colour blends of these products. Before selecting your colour, please ask to see several full-size shingles.



## Hickory

An inviting brown shade with a red undertone, Hickory is an excellent companion to brick and stone homes and works well with browns, beiges, yellows, and golds.

Note: It is difficult to reproduce the colour clarity and actual colour blends of these products. Before selecting your colour, please ask to see several full-size shingles.



## Shakewood

An appealing blend of browns, tans, and gold, warm radiant Shakewood pairs equally well with neutral beige and clay tones, as well as deeper jewel tones.

Note: It is difficult to reproduce the colour clarity and actual colour blends of these products. Before selecting your colour, please ask to see several full-size shingles.



## Weathered Wood

The perfect neutral colour, Weathered Wood complements a broad range of hues and works well with sage, cream, ivory, and beige.

Note: It is difficult to reproduce the colour clarity and actual colour blends of these products. Before selecting your colour, please ask to see several full-size shingles.



## Mission Brown

Emulating the rustic shades and tones of the earth, Mission Brown provides a simple natural backdrop that allows other colours to appear richer and brighter.

Note: It is difficult to reproduce the colour clarity and actual colour blends of these products. Before selecting your colour, please ask to see several full-size shingles.



## Birchwood

A soft neutral gray with subtle tints, Birchwood flatters homes with clean lines and harmonizes well with city or suburban environments.

## Hunter Green

A rich colour with dramatic undertones, Hunter Green makes people take notice.

## Slate

A cool gray with a beautiful green undertone, Slate coordinates well with both grays and greens, as well as with white, cream, and ivory exteriors.

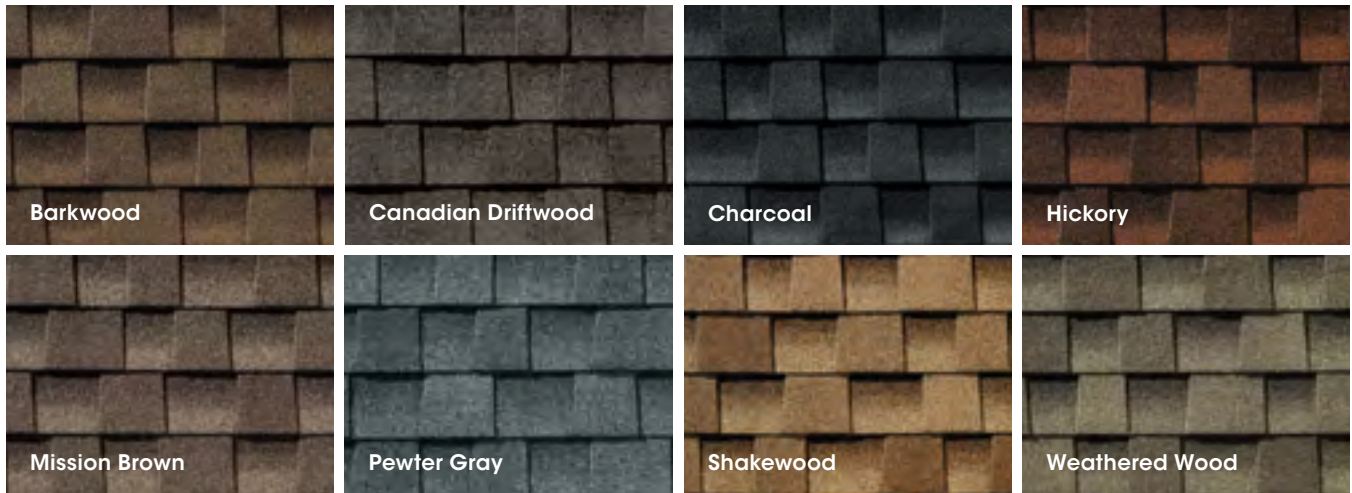
Note: It is difficult to reproduce the colour clarity and actual colour blends of these products. Before selecting your colour, please ask to see several full-size shingles.



# Colour Availability



## Nationally Available Colours



## Regionally Available Colours (See next page for details.)



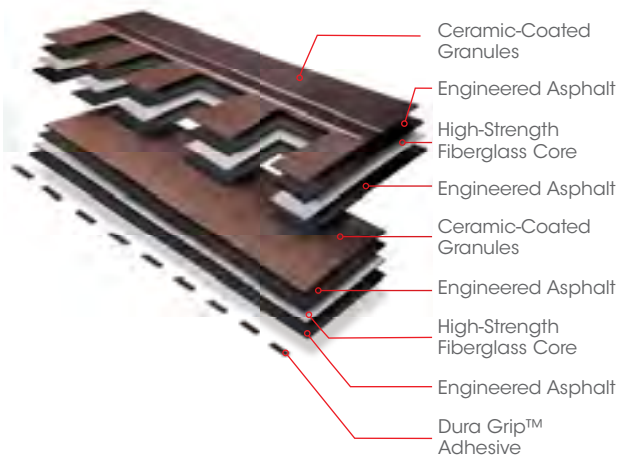
For more details  
visit [gaf.ca/HDZ](http://gaf.ca/HDZ)

# Timberline® HDZ™ Availability

Colour availability Chart	8	9	10	11
<b>Most Popular Colours:</b>				
Barkwood	•	•	•	•
Canadian Driftwood	•	•	•	•
Charcoal	•	•	•	•
Hickory	•	•	•	•
Mission Brown	•	•	•	•
Pewter Gray	•	•	•	•
Shakewood	•	•	•	•
Weathered Wood	•	•	•	•
<b>Regional Colours:</b>				
Birchwood	•	•	•	•
Hunter Green	•	•	•	•
Slate	•	•	•	•



## The protective layers of a Timberline® HDZ™ Shingle

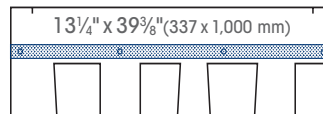


### Product/System Specifics

- Fiberglass asphalt construction
- Dimensions (approx.): 13 1/4" x 39 3/8" (337 x 1,000 mm)
- Exposure: 5 5/8" (143 mm)
- Bundles/Square: 3
- Pieces/Square: 64
- StainGuard® Algae Protection<sup>1</sup>
- Hip/Ridge: TimberTex®; TimberCrest®; Seal-A-Ridge®
- Starter: Pro-Start®; QuickStart®; WeatherBlocker™

### Applicable Standards & Protocols:

- UL Listed to ANSI/UL 790 Class A
- Classified by UL in accordance with ICC-ES AC438
- Meets ASTM D7158, Class H
- Meets ASTM D3161, Class F
- Meets ASTM D3018, Type 1
- Meets ASTM D3462<sup>2</sup>
- ICC-ES Evaluation Reports ESR-1475 and ESR-3267
- Meets or exceeds CSA A123.5<sup>3</sup>



<sup>1</sup> StainGuard® algae protection is available only on shingles sold in packages bearing the StainGuard® logo. Products with StainGuard® algae protection are covered by a 10-year limited warranty against blue-green algae discoloration. See *GAF Shingle & Accessory Limited Warranty* for complete coverage and restrictions.

<sup>2</sup> Periodically tested by independent and internal labs to ensure compliance with ASTM D3462 at time of manufacture.

<sup>3</sup> Applies to product sold in Canada only.

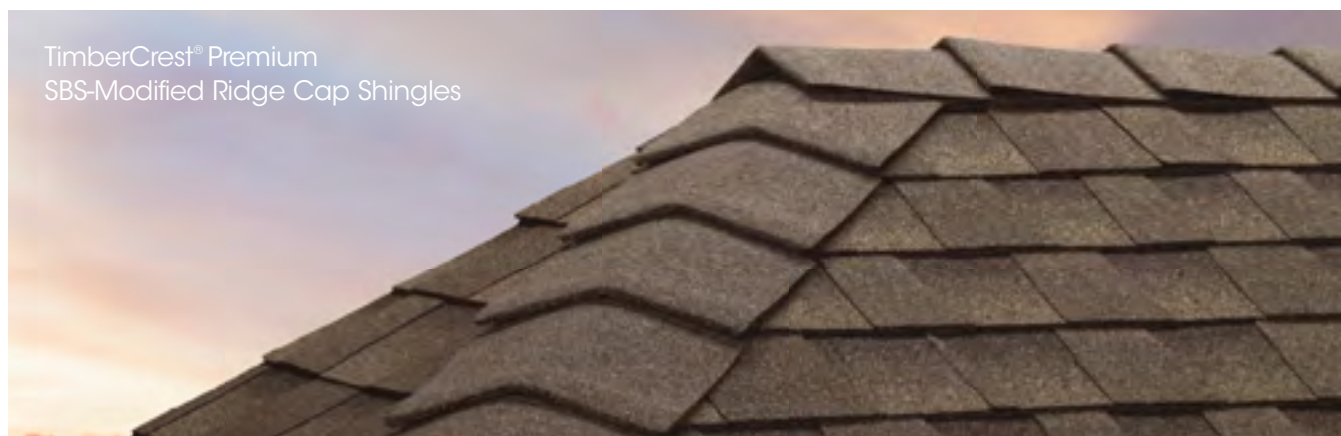
# TimberTex® and TimberCrest® Premium Ridge Cap Shingles

Hip & Ridge Cap Shingles accentuate the natural beauty of your architectural shingle roof. They're the perfect finishing touch that helps defend against leaks at the hips and ridges.

[gaf.ca/ridgecaps](http://gaf.ca/ridgecaps)



TimberTex® Premium Ridge Cap Shingles

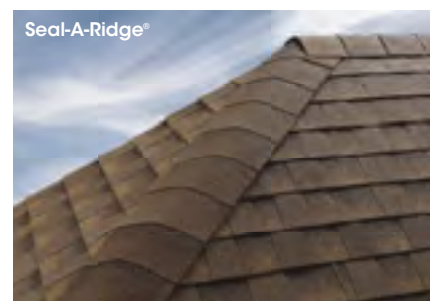


TimberCrest® Premium SBS-Modified Ridge Cap Shingles

TimberTex® and TimberCrest® Premium Ridge Cap Shingles are designed to complement the colour of your Timberline® Shingles. To ensure the closest colour consistency for your roof, ask your contractor to use genuine TimberTex® or TimberCrest® Premium Ridge Cap Shingles.<sup>1</sup>

- Accentuate the beauty of your newly installed shingle roof
- Protect against leaks and blow-offs at the hip and ridge areas of your roof
- Complement the colour of your GAF Shingles with hip and ridge cap shingles manufactured by GAF

## Also available<sup>1</sup>



Seal-A-Ridge®

<sup>1</sup> These products are not available in all areas. See [gaf.ca/ridgecapavailability](http://gaf.ca/ridgecapavailability) for details.

“We have confidence in our installation and that gives the homeowner peace of mind as well.”

— Andy M.  
ABM Roofing\*



**GAF** Timberline<sup>®</sup> HDZ<sup>™</sup>  
High Definition<sup>®</sup> Shingles

### North America's #1-Selling Shingle got even better.

LayerLock<sup>™</sup> Technology mechanically fuses the common bond between overlapping shingle layers, which powers the industry's widest nail zone, for fast, accurate nailing. This gives contractors confidence in their installation and homeowners peace of mind.

Visit [gaf.ca/hdz](http://gaf.ca/hdz)

